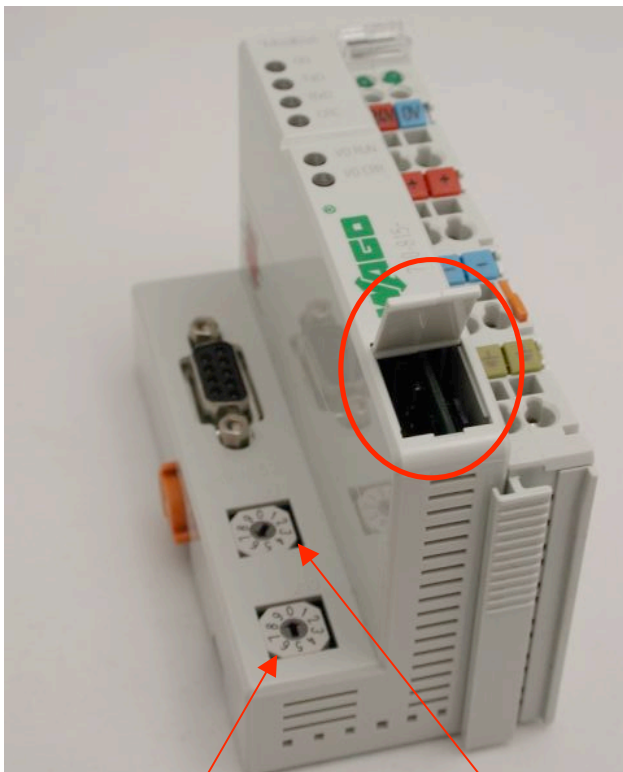




Work instruction

Product Line: Drs 25	Date: 12-1-10
Category: Wago Modbus Flash	Distribution: <input checked="" type="checkbox"/> WEB <input checked="" type="checkbox"/> Work Instruction

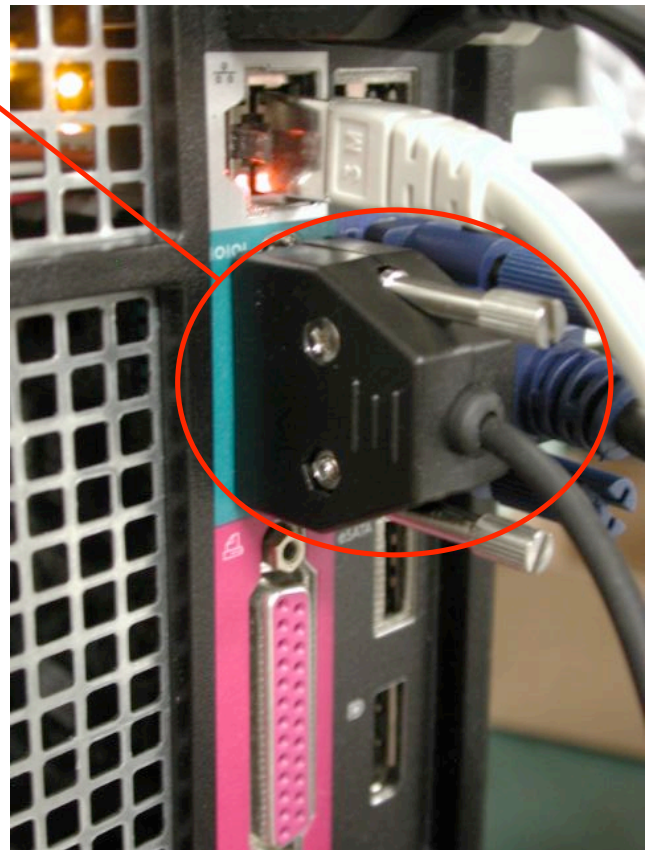
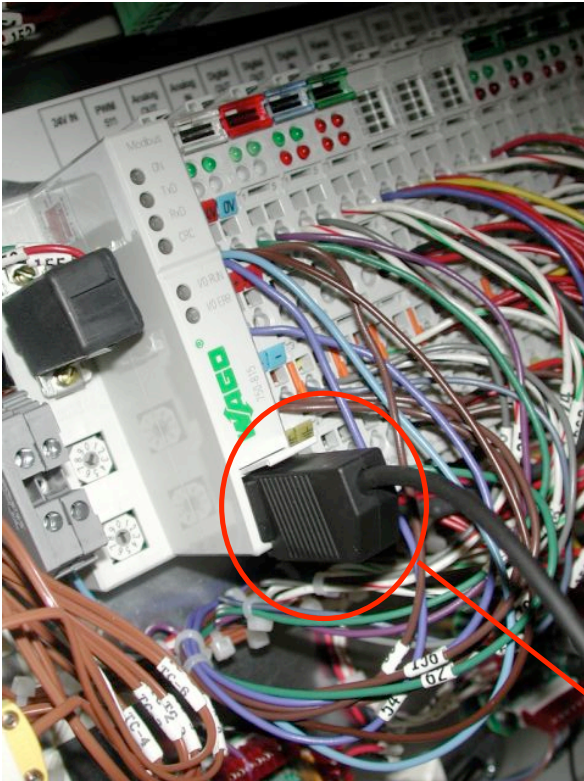
1. Open small access door on main Wago unit.
2. Set small dipswitch under access door to the downward position, as shown, for programming.
3. Set ID pots for 0



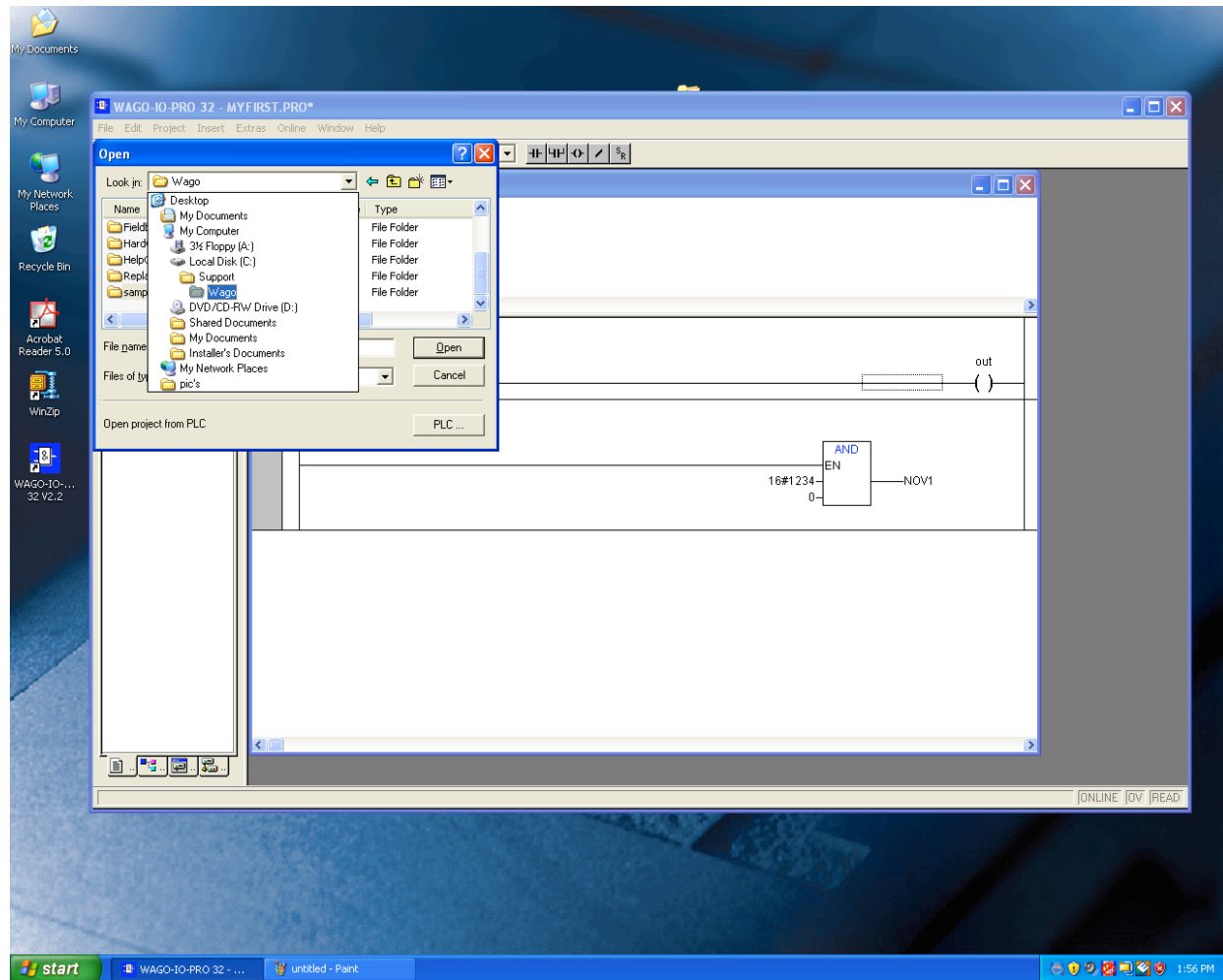
Lower ID pot

Upper ID pot

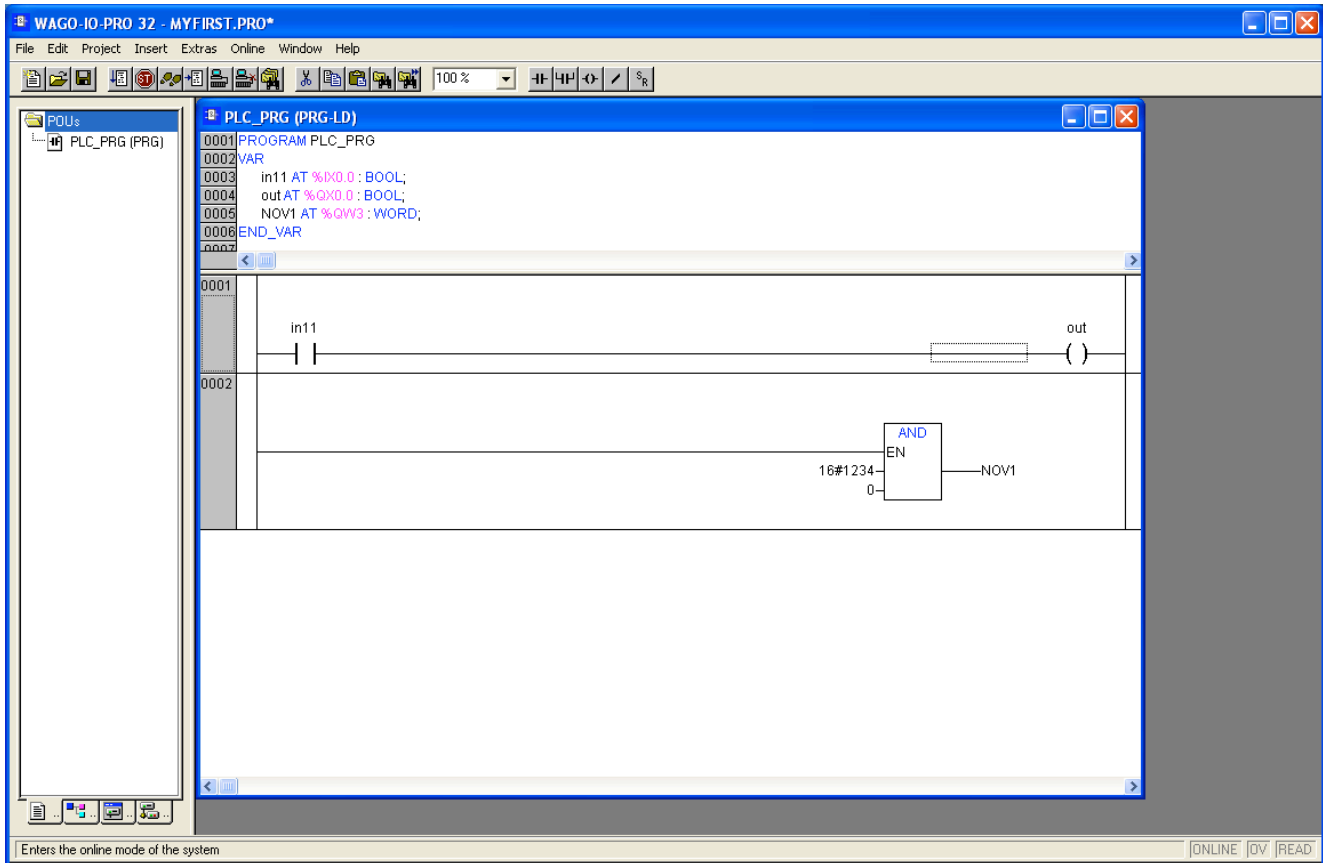
4. Install Wago I/O Cable between the main Wago unit and the serial port on the back of the computer.



5. Power up DRS25.
6. Go to Start, Programs, Wago I/O Pro 32
7. Go to File, Open then Browse To Support, Wago, Sample Programs, Baud Rate Setup Pro if prompted to save changes select No
8. Open Wago-10-Pro32V2



9. Go to online in the tool bar select Log In – if a No Program notice appears, select Yes



10. Go to online then run; go to online and flash. Observe brief flicker from red CRC LED on Wago Unit. Exit Wago Software.

11. Power down, reset ID pots to 0 lower and 6 top.

12. Remove Wago cable and store properly.

13. Re-set the dip switch on the Wago unit to the upper most position.